



91,077 SF AVAILABLE
PART OF 331,927 SF BUILDING

Fontana Commerce Center, Building 1
14780 Bar Harbor Rd., Fontana, CA 92336

BUILDING DETAILS - AVAILABLE SPACE:

DOCK HIGH DOORS: 14

GRADE LEVEL DOORS: 1

CLEAR HEIGHT (first column): 32'

HEIGHT (at walls/for racking): 30'

OFFICE: Existing toilet room

SPRINKLERS: ESFR

POWER: 800+ amps, 277/480 volts,
3 phase/4 wire

PARKING SPACES: 48



CONTACT INFORMATION:

NORM GOLD

(310) 835-1111

ngold@intexcorp.com

ROBERT MCCULLOUGH

(310) 835-1111

rmccullough@intexcorp.com

**CONTACT INFORMATION:****NORM GOLD**

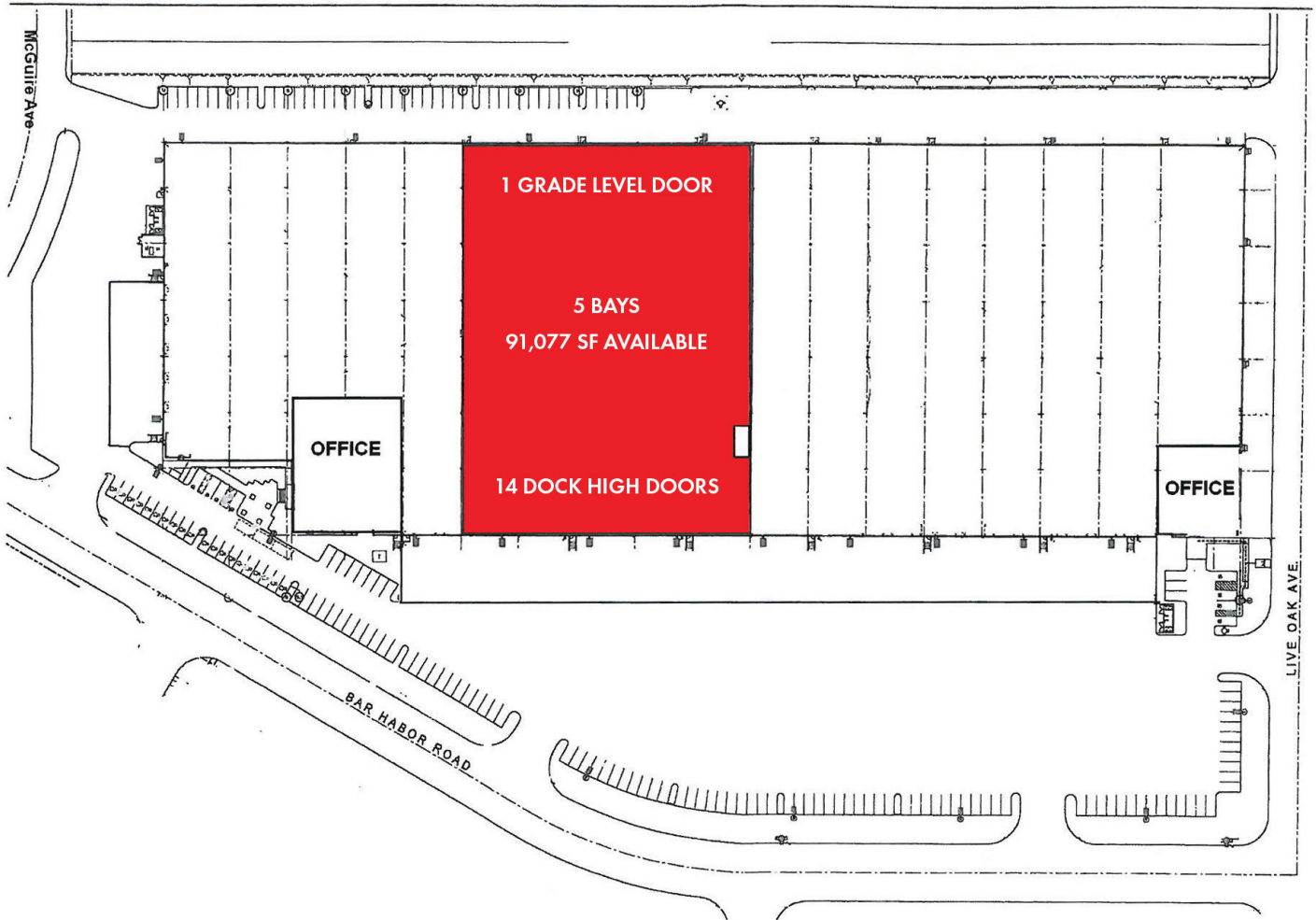
(310) 835-1111

ngold@intexcorp.com

ROBERT MCCULLOUGH

(310) 835-1111

rmccullough@intexcorp.com

**CONTACT INFORMATION:****NORM GOLD**

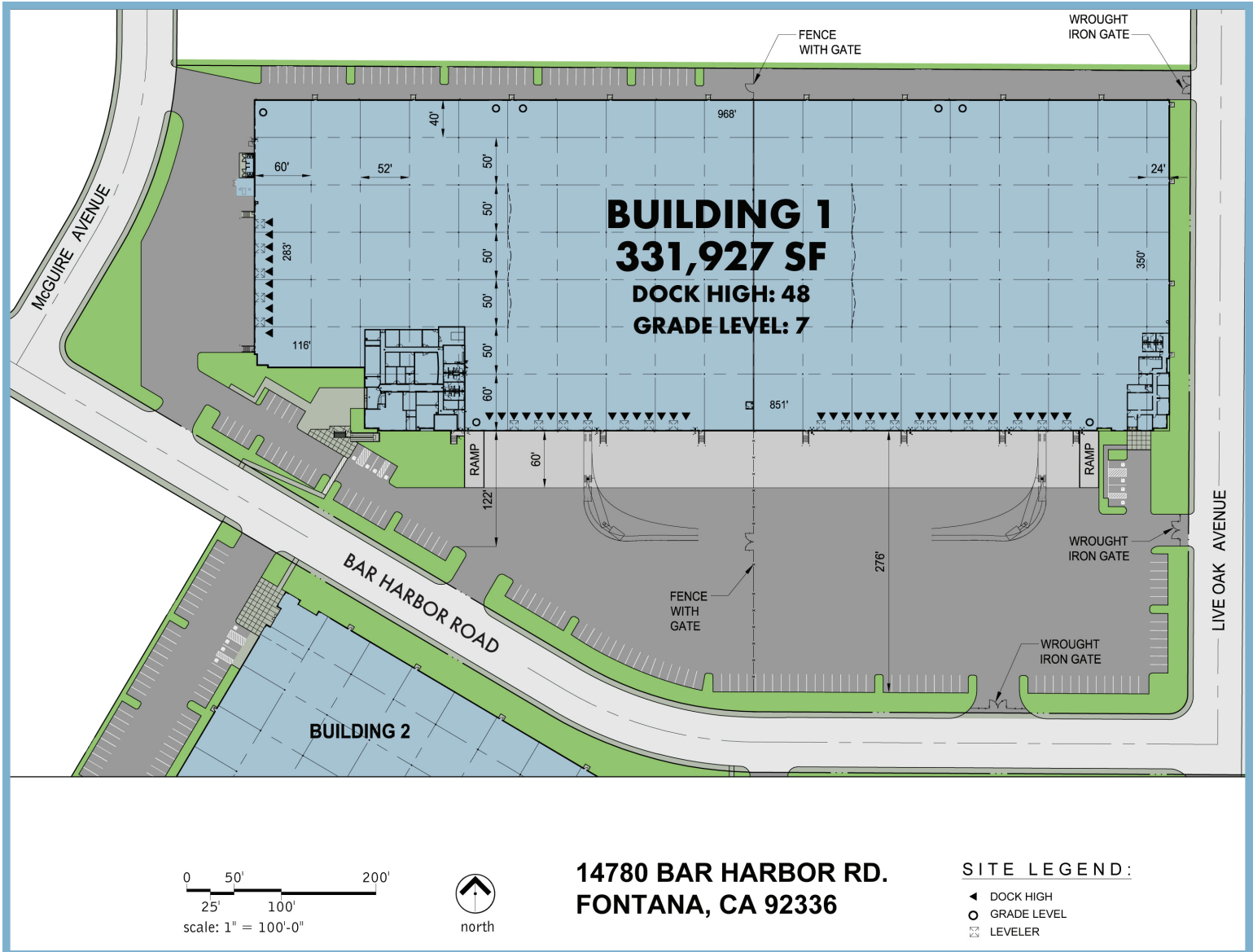
(310) 835-1111

ngold@intexcorp.com

ROBERT MCCULLOUGH

(310) 835-1111

rmccullough@intexcorp.com


CONTACT INFORMATION:
NORM GOLD

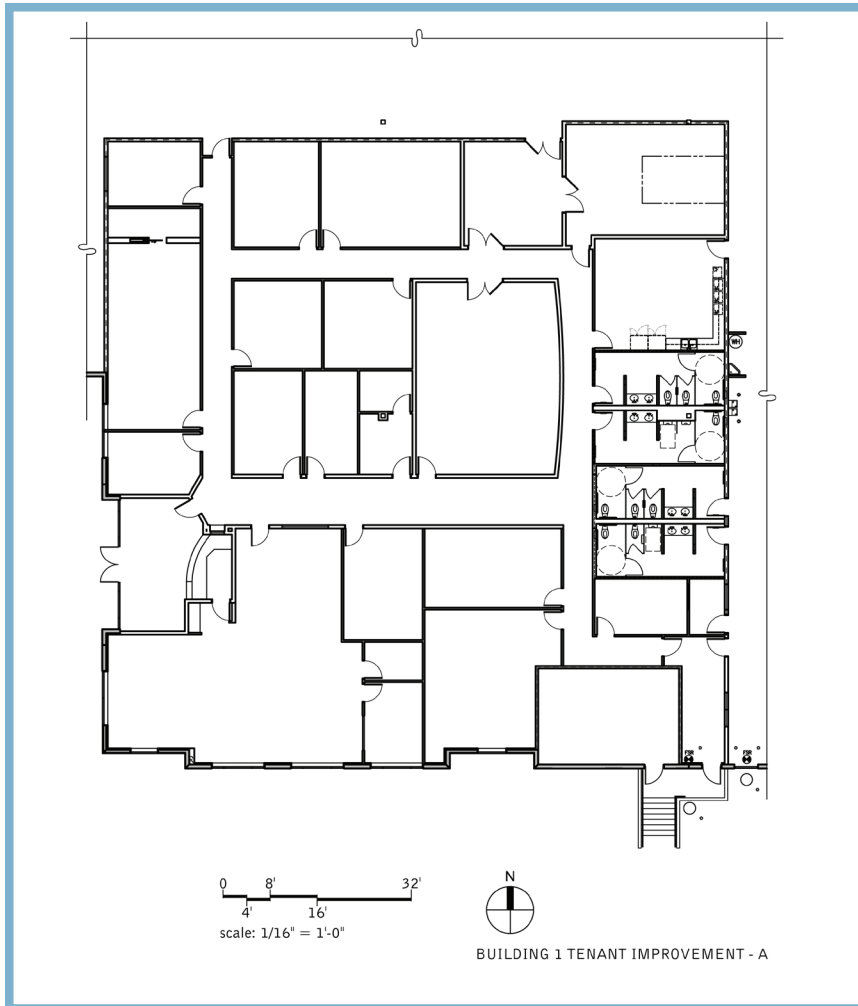
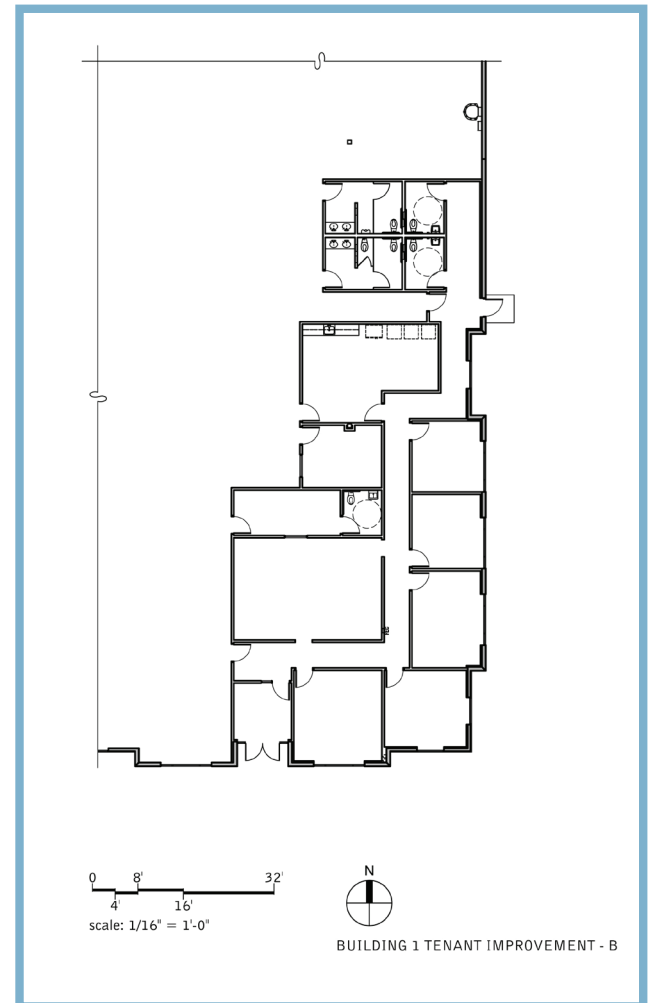
(310) 835-1111

ngold@intexcorp.com

ROBERT MCCULLOUGH

(310) 835-1111

rmccullough@intexcorp.com

SUITE A

10,841 SF
SUITE B

3,627 SF
CONTACT INFORMATION:
NORM GOLD
(310) 835-1111
ngold@intexcorp.com
ROBERT MCCULLOUGH
(310) 835-1111
rmccullough@intexcorp.com
DISCLAIMER

Unitex attempts to be as accurate as possible. We have in preparing this information, used our best endeavors to ensure that the information contained herein is true and accurate, but we make no representation, guarantee or warranties, expressed or implied, as to the accuracy of the information being complete, or reliable, current or error-free and assume no responsibility for any errors or omissions contained therein. All references to age, square footage, income, and expenses are approximate. This is not a survey, any pictures, images, or drawings are only for illustrative purposes. Any party should conduct their own independent investigations and rely solely on those results. Information is being furnished to the recipient exclusively for the recipient's own use and convenience. Any reliance on the contents shall be solely at the recipient's own risk.